



WISEFULL TECHNOLOGY



LED Product Catalogue

Updated: March 31st, 2011

Prepared: Wisefull RD Team

ISO 9001 / ISO 14001 / OHSAS 18001 Certified
Your Reliable Thermal Partner



Contents:

I. LED cooling product roadmap

II. LED spotlight heat sinks & components

III. LED down light heat sinks

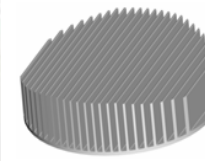
IV. Street light thermal solutions

V. CCTV (IR) light thermal solutions

VI. Professional light thermal solutions

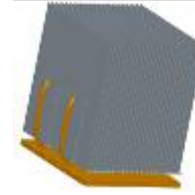
LED cooling products roadmap

Street light
heat sinks



Power:
60W
~240W

Down light
heat sinks



Power:
15W
~60W

Spot lights



Power:
1W
~15W

Cooling Products

ISO 9001 / ISO 14001 / OHSAS 18001 Certified
Your Reliable Thermal Partner



LED spotlight heat sinks & components

ISO 9001 / ISO 14001 / OHSAS 18001 Certified
Your Reliable Thermal Partner

MR16 3622L LED Heat Sink

P/N: WF1006-16-01



Side 1



Side 2

Material	AL 1050
Outside Diameter (mm)	D 50 mm X L 30mm
Weight (g)	9 ± 3g
Power Capability (Watts)	4W LED
Thermal resistance	~9.50°C/W
Finish	Nickel plating

Pros:

Specifically designed for highly efficient MR 16 LED
Great heat dissipation with radial stacked fins
Ease in assembling (only screws required)

*tooled, but not MP yet

MR16 3621 LED Heat Sink

P/N: WF1006-16-02



Material	AL 1050
Outside Diameter (mm)	D 49.23 mm X L 21.6mm
Weight (g)	13.3g
Power Capability (Watts)	4W LED
Thermal resistance	~9.50°C/W
Finish	Degrease

Pros:

Specifically designed for highly efficient MR 16 LED
Great heat dissipation with radial stacked fins
Ease in assembling (only screws required)

ISO 9001 / ISO 14001 / OHSAS 18001 Certified
Your Reliable Thermal Partner

MR16 3223L LED Heat Sink

P/N: WF1006-16-03



Material	AL 6063
Outside Diameter (mm)	D 50mm X L 23mm
Weight (g)	33 ± 1g
Power Capadbility (Watts)	4W LED
Thermal resistance	~9.50°C /W
Finish	Silver anodize

Extrusion + Machining
Specifically designed for MR 16 LED

ISO 9001 / ISO 14001 / OHSAS 18001 Certified
Your Reliable Thermal Partner

MR16 4823L LED Heat Sink

P/N: WF1006-16-04



Material	AL 6063
Outside Diameter (mm)	D 50mm X L 23mm
Weight (g)	35 ± 1g
Power Capadbility (Watts)	5W LED
Thermal resistance	~8.60°C /W
Finish	Silver anodize

Extrusion + Machining
Specifically designed for MR 16 LED

ISO 9001 / ISO 14001 / OHSAS 18001 Certified
Your Reliable Thermal Partner

MR16 5023L LED Heat Sink

P/N: WF1006-16-05



Material	AL 6063
Outside Diameter (mm)	D 50 mm X L 23.0 mm
Weight (g)	45 ± 1g
Power Capadbility (Watts)	5W LED
Thermal resistance	~8.60°C /W
Finish	Black anodize

Extrusion + Machining
Specifically designed for MR16 LED

ISO 9001 / ISO 14001 / OHSAS 18001 Certified
Your Reliable Thermal Partner

Bubble light heat sink

P/N: WF1006-16-06

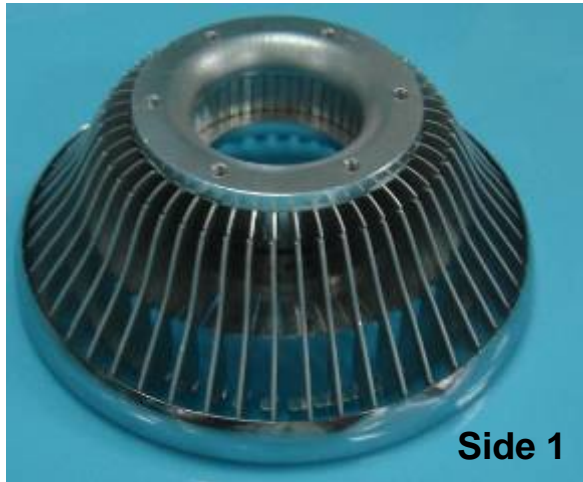


Material	AL 1070
Outside Diameter (mm)	D 60 mm X L 45.0 mm
Weight (g)	40.0 ± 2 g
Power Capadbility (Watts)	6W LED
Thermal resistance	~6.50°C /W
Finish	Silver / Black anodize

Extrusion + Machining
Specifically designed for bubble light LED

PAR30-A_LED Heat sink

P/N: WF1006-16-07



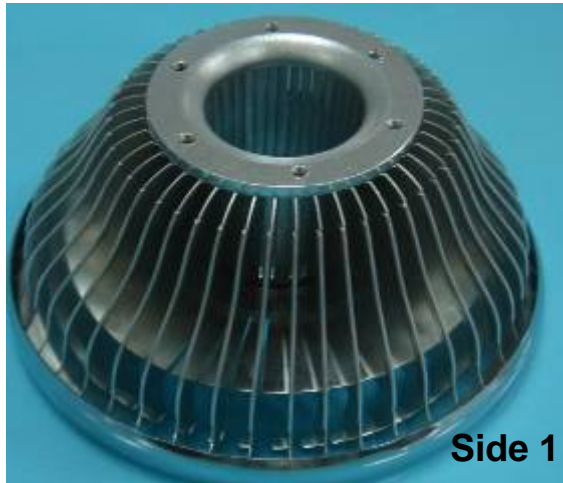
Material	AL 1070
Outside Diameter (mm)	D 97mm X L 37.68mm
Weight (g)	70 ± 5g
Power Capadbility (Watts)	8W LED
Thermal resistance	~4.50°C /W
Finish	Nickel plating

Pros:
Specifically designed for highly efficient PAR 30 LED
Great heat dissipation with radial stacked fins
Ease in assembling (only screws required)

ISO 9001 / ISO 14001 / OHSAS 18001 Certified
Your Reliable Thermal Partner

PAR38-A_LED Heat sink

P/N: WF1006-16-08



Material	AL 1070
Outside Diameter (mm)	D 118.28mm X L 68.1mm
Weight (g)	128 ± 5g
Power Capadbility (Watts)	12W LED
Thermal resistance	~2.70°C/W
Finish	Nickel plating

Pros:
Specifically designed for highly efficient PAR 38 LED
Great heat dissipation with radial stacked fins
Ease in assembling (only screws required)

ISO 9001 / ISO 14001 / OHSAS 18001 Certified
Your Reliable Thermal Partner



LED down light heat sinks

ISO 9001 / ISO 14001 / OHSAS 18001 Certified
Your Reliable Thermal Partner

8 watts solution



P/N: WF1006-16-11

Material: AL1070

LED Power: 8W

Finish: Silver anodize

Thermal resistance: ~4.18 °C/W

ISO 9001 / ISO 14001 / OHSAS 18001 Certified
Your Reliable Thermal Partner

12 watts solution

P/N: WF1006-16-12



Material: AL6063

LED Power: 12W

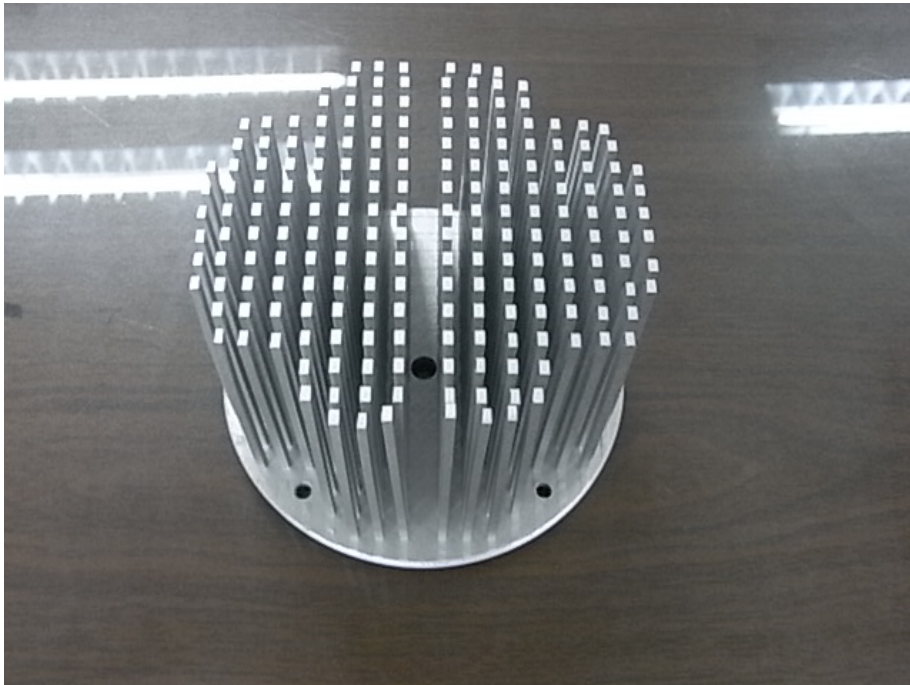
Finish: Silver anodize

Thermal resistance: ~3.05 °C/W

ISO 9001 / ISO 14001 / OHSAS 18001 Certified
Your Reliable Thermal Partner

20 watts solution

P/N: WF1006-16-13



Material: AL6063

LED Power: 20W

Finish: Silver anodize

Thermal resistance: $\sim 1.75^{\circ}\text{C}/\text{W}$

25 watts solution



P/N: WF1006-16-14

Material: AL6063

LED Power: 25W

**Finish: Silver anodize
Black anodize**

Thermal resistance: $\sim 1.24^{\circ}\text{C}/\text{W}$

**ISO 9001 / ISO 14001 / OHSAS 18001 Certified
Your Reliable Thermal Partner**

40 watts solution

P/N: WF1006-16-15



Material: AL6063+C1100

LED Power: 40W

Finish: Nickel plating

Thermal resistance: $\sim 0.995^{\circ}\text{C}/\text{W}$

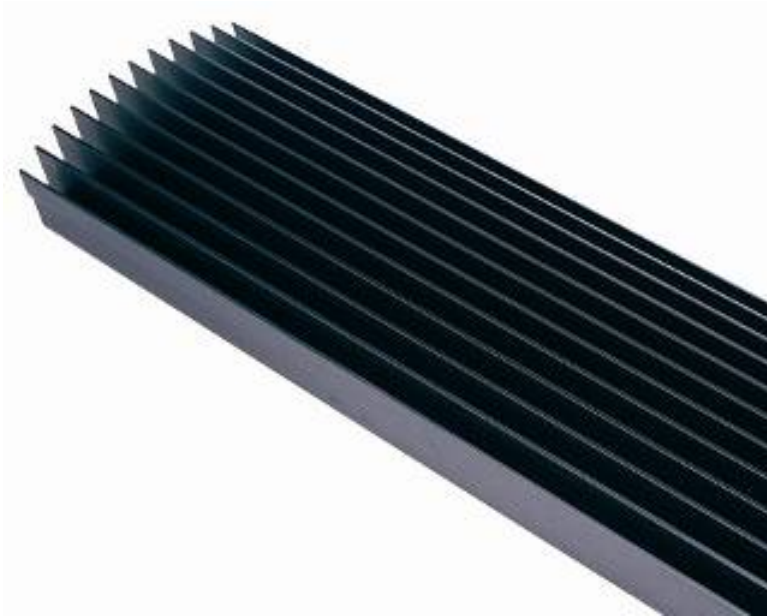
ISO 9001 / ISO 14001 / OHSAS 18001 Certified
Your Reliable Thermal Partner



LED street light thermal solutions

ISO 9001 / ISO 14001 / OHSAS 18001 Certified
Your Reliable Thermal Partner

60 watts solution



P/N: WF1102-01-06

LED Power: 60W

Material: AL6063

Finish: Black anodize

Thermal resistance: ~0.670C/W

ISO 9001 / ISO 14001 / OHSAS 18001 Certified
Your Reliable Thermal Partner

60 watts solution

P/N: WF1006-16-17



LED Power: 60W

Material: AL6063+C1100

Finish: Nickel plating

Thermal resistance: ~0.595C/W

ISO 9001 / ISO 14001 / OHSAS 18001 Certified
Your Reliable Thermal Partner

100 watts solution

P/N: WF1102-01-09

LED Power: 100W

Material: AL1070

Finish: Black anodize

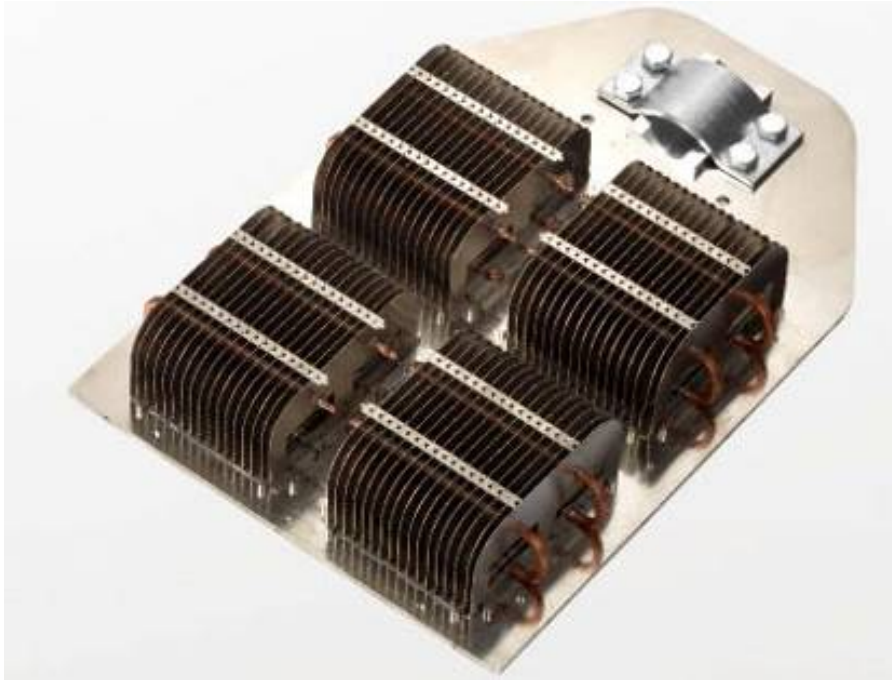
Thermal resistance: ~0.497C/W



ISO 9001 / ISO 14001 / OHSAS 18001 Certified
Your Reliable Thermal Partner

120 watts solution

P/N: WF1006-16-19



LED Power: 120W

Material: AL6063+C1100

Finish: Nickel plating

Thermal resistance: ~0.425C/W

ISO 9001 / ISO 14001 / OHSAS 18001 Certified
Your Reliable Thermal Partner

150 watts solution



P/N: WF1006-16-20

Material: AL6063+C1100

LED Power: 150W

Finish: Nickel plating

Thermal resistance: ~0.355C/W

ISO 9001 / ISO 14001 / OHSAS 18001 Certified
Your Reliable Thermal Partner



CCTV (IR) light thermal solutions

ISO 9001 / ISO 14001 / OHSAS 18001 Certified
Your Reliable Thermal Partner

10 watts solution

P/N: WF1102-01-10



Material: AL1070

LED Power: 10W

Thermal resistance: ~2.95°C/W

Finish: Black anodize

15 watts solution



P/N: WF1102-01-11

Material: AL1070

LED Power: 15W

Thermal resistance: $\sim 1.76^{\circ}\text{C}/\text{W}$

Finish: Black anodize

30 watts solution



P/N: WF1102-01-12

Material: AL1070

LED Power: 30W

Thermal resistance: $\sim 1.19^{\circ}\text{C}/\text{W}$

Finish: Black anodize

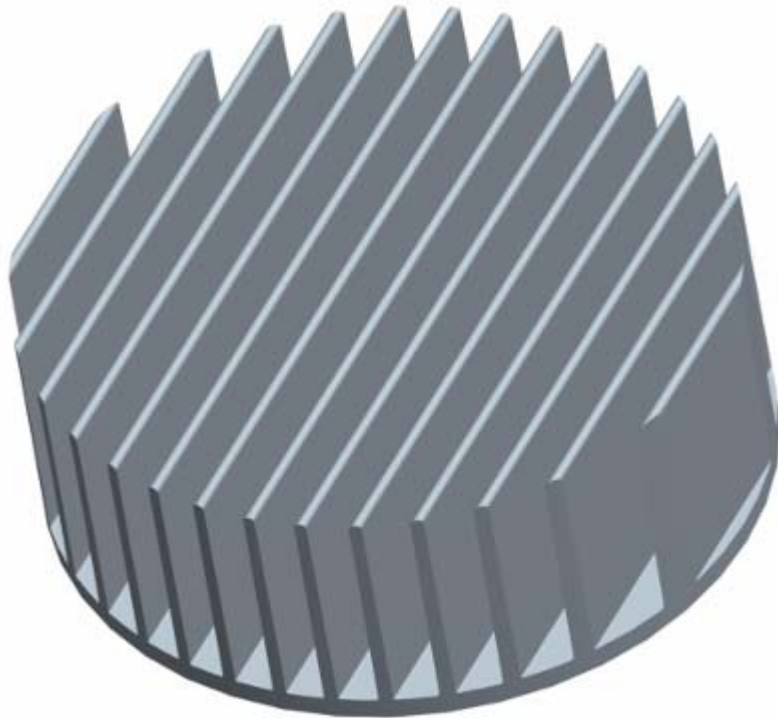
ISO 9001 / ISO 14001 / OHSAS 18001 Certified
Your Reliable Thermal Partner



LED special light thermal solutions

ISO 9001 / ISO 14001 / OHSAS 18001 Certified
Your Reliable Thermal Partner

60 watts solution



P/N: WF1006-16-21

Material: AL6063

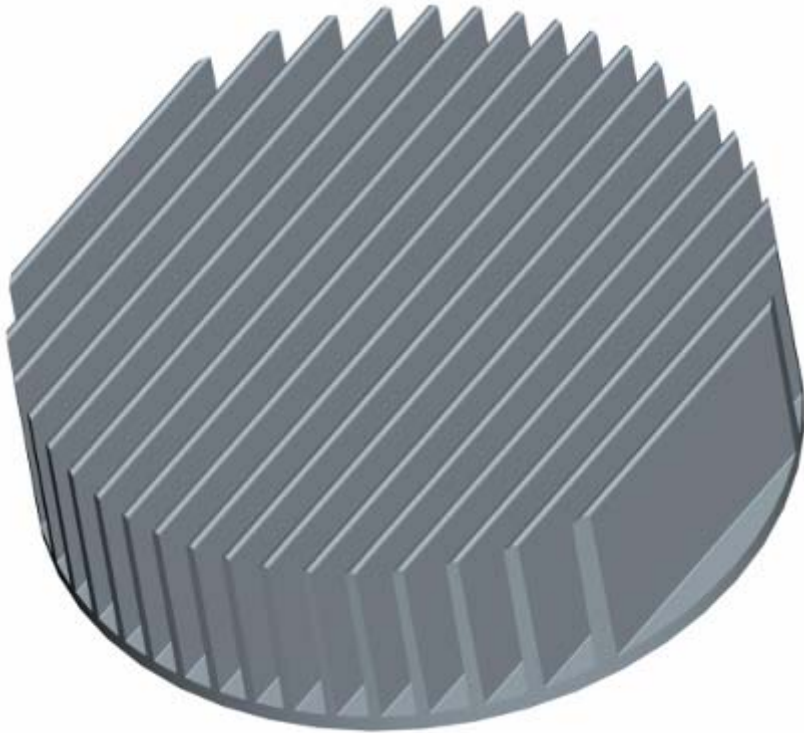
LED Power: 60W

Thermal resistance: ~0.700°C/W

Finish: Black anodize

Silver anodize

80 watts solution



P/N: WF1006-16-22

Material: AL6063

LED Power: 80W

Thermal resistance: ~0.438°C/W

Finish: Black anodize

Silver anodize

120 watts solution

P/N: WF1006-16-23

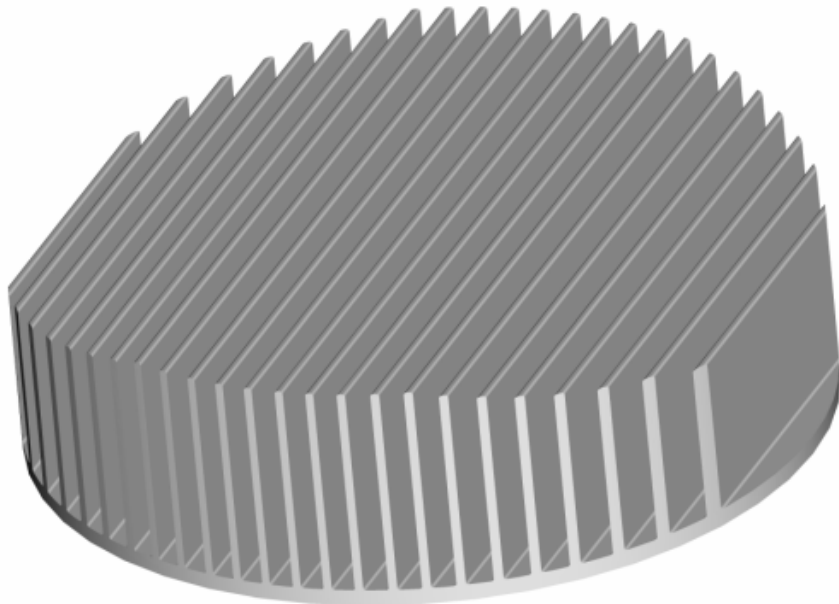
Material: AL6063

LED Power: 120W

Thermal resistance: $\sim 0.272^{\circ}\text{C}/\text{W}$

Finish: Black anodize

Silver anodize



ISO 9001 / ISO 14001 / OHSAS 18001 Certified
Your Reliable Thermal Partner



Contact us

Technical note:

The thermal resistance data were measured under certain test conditions which include LED chip type, size, and environment conditions. The data is for general reference only and may be different for different lighting fixtures, modules or conditions. Any technical questions or business concerns, please contact below Wisefull team for more details.

Amanda Wu, Senior Sales Manager, Email: awu@wisefull.com

Wilson Peng, Senior RD Manager, Email: weihua@wisefull.com

Tinna Liu, Senior RD Engineer, Email: wfrc1@wisefull.com

Look Forward to Working with You!



www.ledlightforyou.com